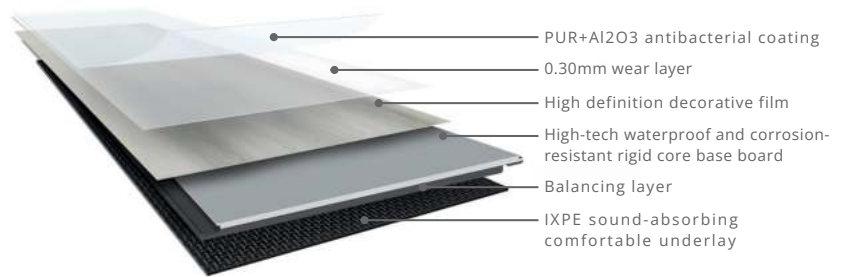


VOUGE SERIES

Vertiflor[®]



Technical Support



0.30mm wear layer

These products have been tested according to CNS national inspection standards, demonstrating wear resistance up to 30,000 cycles.

Compliant with European specification EN10874 grade classifications, the commercial and industrial grades achieve the highest rating of "AC3".



Quick & Easy Installation

The superior Vertiflor System makes installation quick and effortless. It allows vinyl planks to click and lock together in place easily, ensuring the floor is secured and connected.



Water Resistant

Vertiflor Click System is highly resistant to water and moisture. Its dense core and protective wear layer make it suitable for areas prone to spills and without the worry of warping or buckling.



Easy Maintenance

With a sealed top layer, Vertiflor rigid vinyl flooring provide a hygienic surface that requires low maintenance. Cleaning is made effortless with these vinyl planks.



Warm Flooring

Vertiflor rigid vinyl flooring are warm to touch, and also soft to walk on. The comfortable surface structures make them a joy to walk on, especially when barefoot.



Scratch Resistant

Vertiflor vinyl plank are made with durable layers for superior protection against scratches. With Vertiflor, you no longer need to worry about paws and claws!



Sound Reduction

The soft vinyl floor absorbs step noise, providing a quiet and comfortable walking experience.



Slip Resistant

With matt finish and true-to-life wood texture, Vertiflor rigid vinyl flooring offers an anti-slip surface that is safe for you and your family.



Flame Retardant

Due to its outstanding resistance against fire, Vertiflor rigid vinyl flooring are able to reduce the spread of fire effectively.

"Flooring the Nation with Passion and Innovation"

VOUGE

SERIES

RVF Collection



VV 5301

Athens



VV 5302

Beijing



VV 5303

Crete



VV 5304

Denpasar



VV 5305

Ethiopia



VV 5306

Florence

Size : (W) 180mm x (L) 1220mm

Thickness : 5.0mm

1 Box (12 pcs) : 2.63m²



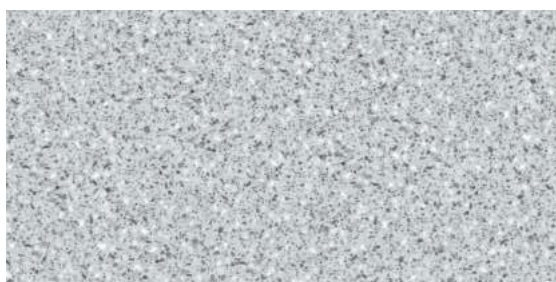
VC 5307

Grenada



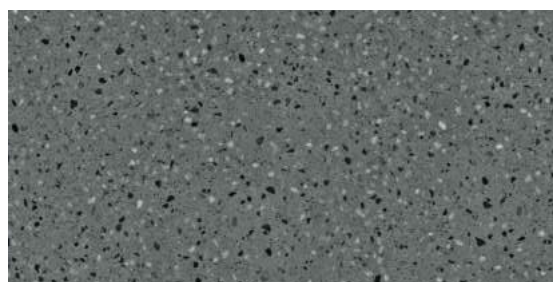
VC 5308

Honduras



VG 5309

Istanbul



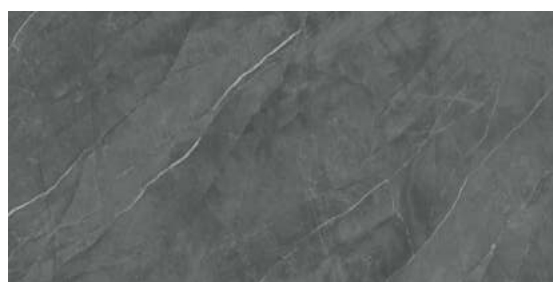
VG 5310

Jaipur



VM 5311

Kyoto



VM 5312

London

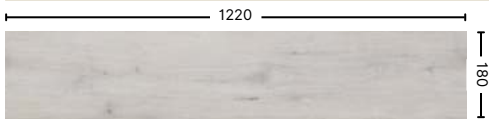
Size : (W) 308mm x (L) 600mm

Thickness : 5.0mm

1 Box (13 pcs) : 2.40m²

VOUGE SERIES

Wood Pattern



1 Box (12 pcs) : 2.63m²
Wear layer : 0.3mm
Thickness : 5.0mm

Athens
VW 5301



1 Box (12 pcs) : 2.63m²
Wear layer : 0.3mm
Thickness : 5.0mm

Beijing
VW 5302



VOUGE SERIES

Wood Pattern



1 Box (12 pcs) : 2.63m²
Wear layer : 0.3mm
Thickness : 5.0mm

Crete
VW 5303



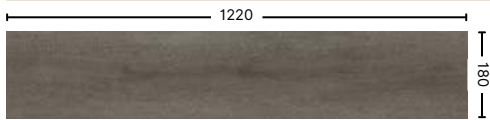
1 Box (12 pcs) : 2.63m²
Wear layer : 0.3mm
Thickness : 5.0mm

Denpasar
VW 5304



VOUGE SERIES

Wood Pattern



1 Box (12 pcs) : 2.63m²
Wear layer : 0.3mm
Thickness : 5.0mm

Ethiopia
VW 5305



1 Box (12 pcs) : 2.63m²
Wear layer : 0.3mm
Thickness : 5.0mm

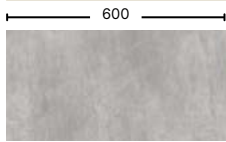
Florence
VW 5306



VOUGE

SERIES

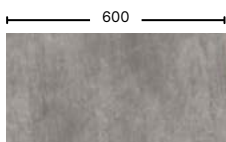
Concrete Pattern



1 Box (13 pcs) : 2.40m²
Wear layer : 0.3mm
Thickness : 5.0mm

Grenada

VC 5307



1 Box (13 pcs) : 2.40m²
Wear layer : 0.3mm
Thickness : 5.0mm

Honduras

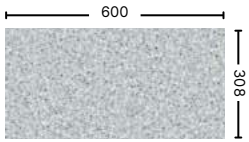
VC 5308



VOUGE

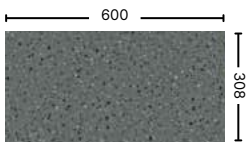
SERIES

Granite Pattern



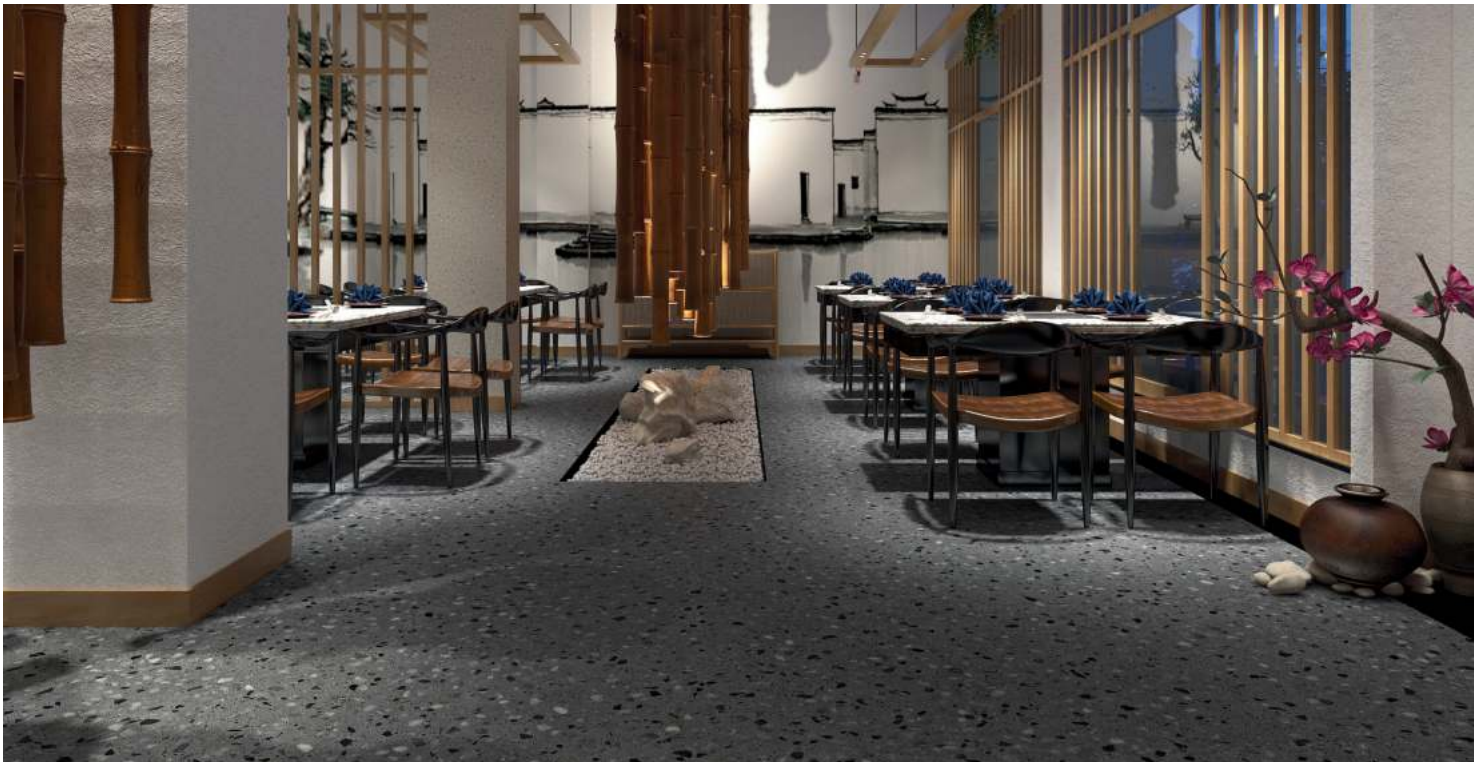
1 Box (13 pcs) : 2.40m²
Wear layer : 0.3mm
Thickness : 5.0mm

Istanbul
VG 5309



1 Box (13 pcs) : 2.40m²
Wear layer : 0.3mm
Thickness : 5.0mm

Jaipur
VG 5310



VOUGE

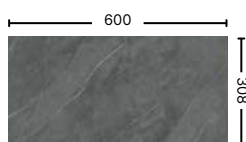
SERIES

Marble Pattern



1 Box (13 pcs) : 2.40m²
Wear layer : 0.3mm
Thickness : 5.0mm

Kyoto
VM 5311



1 Box (13 pcs) : 2.40m²
Wear layer : 0.3mm
Thickness : 5.0mm

London
VM 5312





Technical Information

TEST ITEM	TEST METHOD	TEST REPORT
Overall thickness	ISO 24346	4.9 - 5.1mm
Thickness of wear layer	ISO 24346	Specification: $\pm 0.03\text{mm}$
Dimensions	ISO 24341	$\pm 0.10\text{mm}$ (6"~9") $\pm 0.30\text{mm}$ (12"~24") $\pm 0.50\text{mm}$ (36"~54")
Squareness	ISO 24341	≤ 0.15
Straightness	ISO 24341	≤ 0.15
Openings	ISO 24341	≤ 0.10
Height difference	ISO 24341	≤ 0.10
Dimension stability	ISO 23999	$\leq 0.10\%$
Curling	ISO 23999	$\leq 1.0\text{mm}$ (80°C, 6h)
Peeling strength	ISO 24345	$\geq 80\text{N}/5\text{cm}$
Determination of mass per unit area	ISO 23997	Standard: (-10%~13%)
Abrasion loss	EN 660-2	$\leq 0.015\text{g}/1000\text{r}$
Residual indentation	ISO 24343-1	$\leq 0.10\text{mm}$
Fire classification	EN 13501	Bf1S1
Slip resistance	DIN 51130	R10
Color fastness to light	ISO 105 - B02	≥ 6
Staining resistance	ISO 26987	Pass
Migration of certain elements	EN 71 Part 3	Pass
Large-diameter ball test	EN 16511 & EN 13329	Pass
Light ageing test	ISO 4892-2 & ISO105-A02	Class 4
Formaldehyde Release	EN 13986	E1
Burning cigarettes	EN 1399	Class 4
Antimicrobial activity test	ASTM G 21-15	Class 0
Thermal Conductivity	ISO10456	$0.02\text{m}^2\text{K} / \text{W}$
Thermal Resistance	EN 12664	$0.061 (\text{m}^2\cdot\text{k}) / \text{W}$
Impact sound reduction	ISO 717-2	$\geq 8\text{dB}$
Phthalates	EN 14382	Pass
VOC regulation	ISO 16000 & GB18586	Pass
Impact resistance	EN13329	$\geq 1800\text{mm}, \text{IC3}$



"Flooring the Nation with Passion and Innovation"